



PC(D)V series pilot operated check valves not only allow free flow in one direction and block flow in the counter direction under setting opening pressure, but also allow free flow in the counter direction by pilot operation.

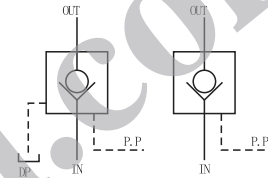
Ordering details

PC(D)V	G	03	05	ET	20
Sort	Mounting type	Nominal size	Cracking pressure	Oil control	Design code
PCV:Pilot operated check valve PCDV:Pressure release type pilot operated check valve	G:Subplate mounting T:Thread mounting	03:NG10 06:NG20 10:NG32	05:0.5bar 50:3.5bar	E:External control internal drain ET:External control external drain	20

Technical specification

Model		PC(D)V-03	PC(D)V-06	PC(D)V-10
Max. flow rate(l/min)		60	200	450
Max. working pressure (MPa)		25		
Weight (kgs)	Subplate type	4.5	6.4	11
	Thread type	4.5	6.4	11.8

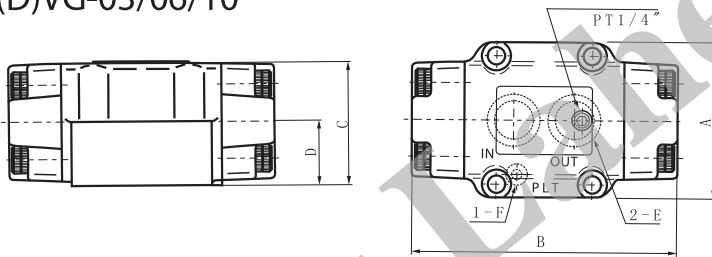
Symbol



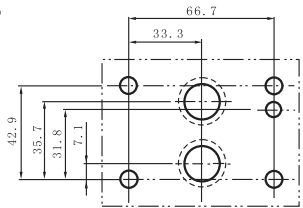
Dimensions

Unit: mm

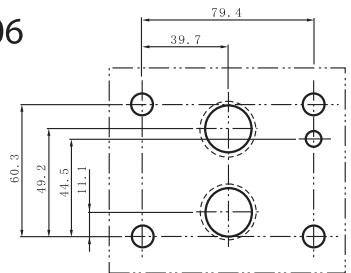
PC(D)VG-03/06/10



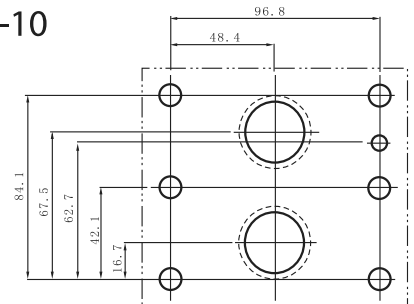
PCVG-03



PCVG-06

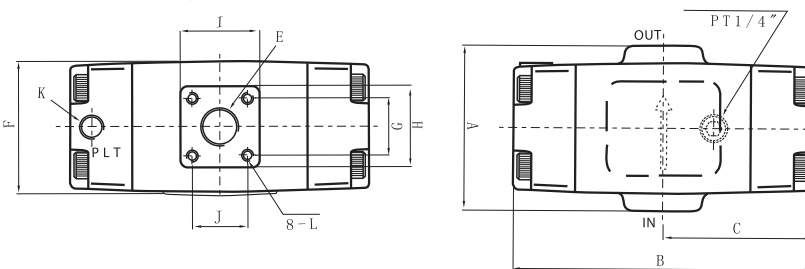


PCVG-10



Model	A	B	C	D	E	F
PC(D)V-G03	91	150	67	42	P18	P10
PC(D)V-G06	98	166	78	40.5	P28	P10
PC(D)V-G10	119	210	93	49	P40	P10

PC(D)VT-03/06/10



Model	A	B	C	E	F	G	H	I	J	K	L
PC(D)V-T03	78	149	74.5	PT3/8"	69	-	37	37	-	PT1/4"	-
PC(D)V-T06	97	166	88	PT3/4"	78	-	62	63	-	PT1/4"	-
PC(D)V-T10	140	212	106	PT1-1/4"	194	56	84	82	56	PT1/4"	M12