

CIT series in-line check valves allow free flow in one direction and block flow in the counter direction.



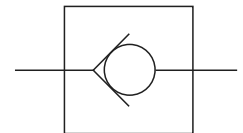
**Ordering details**

CI	T	03	05	10
Sort	Mounting type	Nominal size	Cracking pressure	Design code
In-line check valve	Thread mounting	02:NG6 03:NG10 04:NG16 06:NG20 08:NG25 12:NG40 16:NG50	05:0.35bar 50:3.5bar	10

**Technical specification**

Model	CIT-03	CIT-04	CIT-06	CIT-08	CIT-10	CIT-12	CIT-16
Rated flow (l/min)	40	60	100	180	350	600	1000
Max. operating pressure (MPa)	31.5						
Weight(kgs)	0.2	0.4	0.7	1	2.1	3.2	4.8

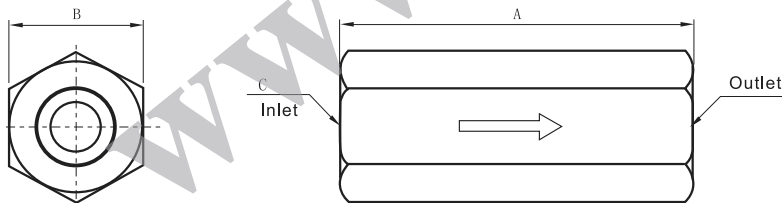
**Symbol**



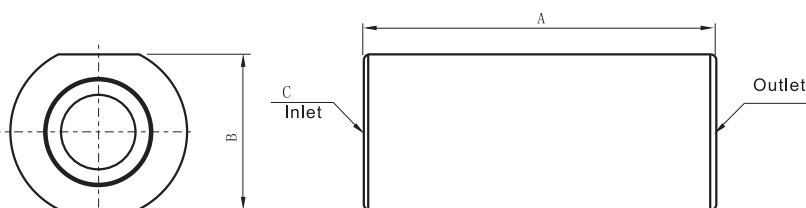
**Dimensions**

Unit: mm

**CIT-03/04/06/08**



**CIT-10/12/16**



Model	A	B	C
CI-T03**	70	26	3/8"
CI-T04**	82	29	1/2"
CI-T06**	91.5	35	3/4"
CI-T08**	112	51	1"
CI-T10**	132	65	1-1/4"
CI-T12**	140	64	1-1/2"
CI-T16**	156	80	2"