

MT series modular check valves are used to restrict flow by handle.

MTCV series modular throttle check valves are used to restrict flow only in one direction.

Ordering details



MT(CV)	02	P	K	20
Sort	Nominal size	Pilot oil port	Adjustment type	Design code
MT:Modular throttle valve MTCV:Modular throttle check valve	02:NG6 Cetop3 03:NG10 Cetop5	P:P port T:T port	No code: Without knob K: With plastic kob	20

Technical specification

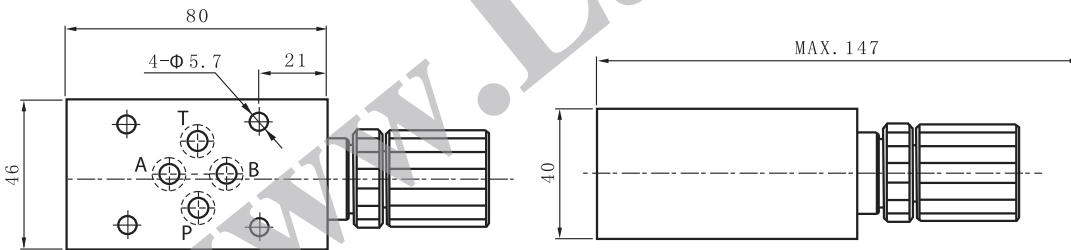
Model	MT(CV)-02	MT(CV)-03
Max.flow rate (l/min)	35	70
Working pressure (MPa)	25	
Weight(kgs)	1.2	2.4

Symbol list

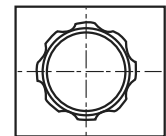


Dimensions

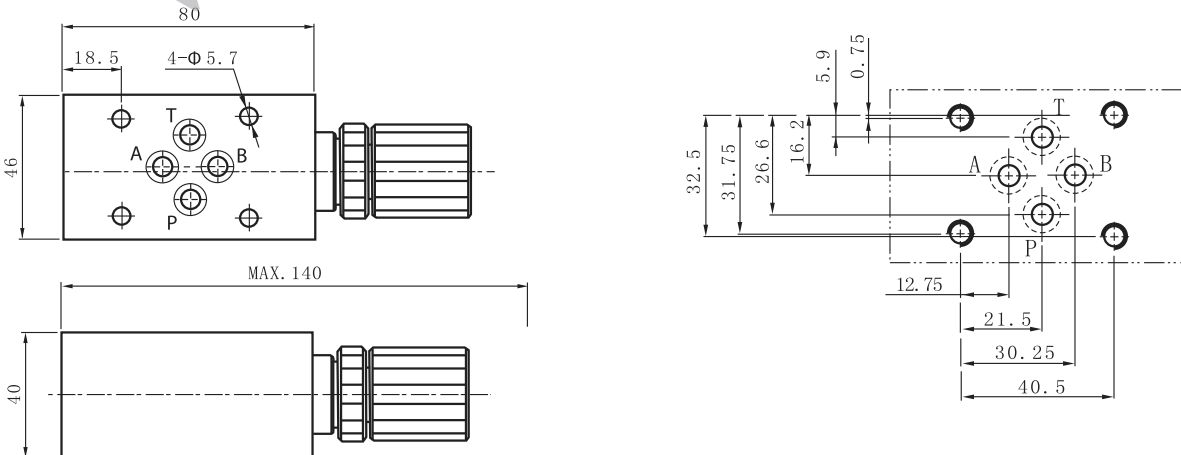
MT-02



Unit: mm



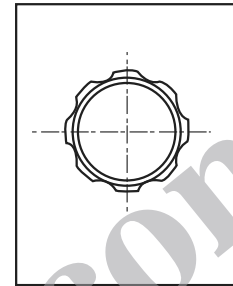
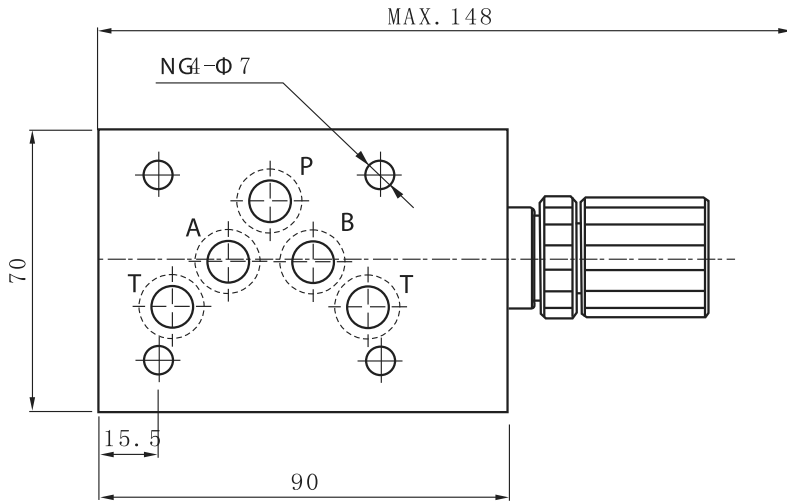
MTCV-02



Dimensions

Unit: mm

MT-03



MTCV-03

