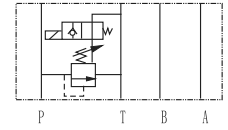


MSRV series modular solenoid operated relief valves can control flow for positive direction pass oil port. It not only can adjust flow by handle, but also use solenoid valve to control the station of relief valve.

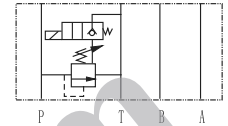
Technical specification

Model	MSRV-03
Max. flow rate (l/min)	70
Working pressure (MPa)	25
Weight(kgs)	3.6

Symbol list



MSRV-03P-1PN



MSRV-03P-1PN



Ordering details

MSRV	03	P	1PN	K	1	A230	20
Sort	Nominal size	Relief form	Normal state	Adjustment type	Pressure adjustment range	Input voltage	Design code
Modular solenoid operated relief valve	03:NG10 Cetop5	P:P→T	1PN:Normal open 1NP:Normal closed	No code: Without knob K: With plastic knob	1:8~70bar 2:35~140bar 3:70~250bar	D12:DC12 D24:DC24 A115:AC115 A230:AC230	20

Dimensions

Unit: mm

