

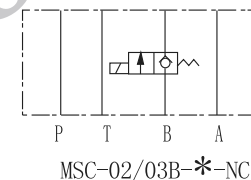
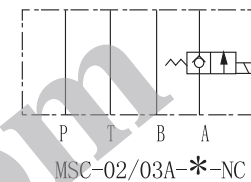
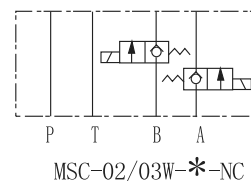
MSC series modular solenoid operated check valves can use solenoid valve to make some oil ports normal open or flow in one way.

**Technical specification**

Model		MSC-02	MSC-03
Max. flow rate (l/min)		20	45
Working pressure (MPa)		25	
Weight(kgs)	A, B	1.3	2.9
	W	1.6	3.3



**Symbol list**



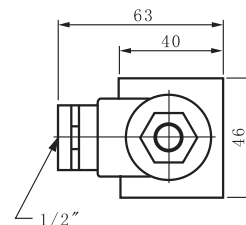
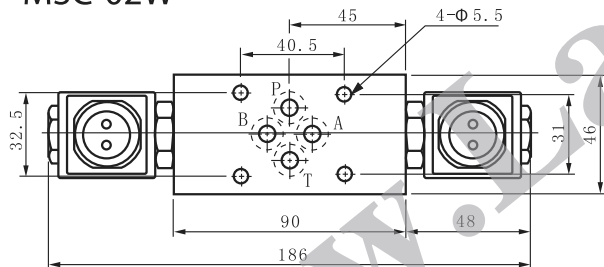
**Ordering details**

MSC	02	A	A230	NC	20
Sort	Nominal size	Pilot oil port	Input voltage	Normal state	Design code
Modular solenoid operated check valve	02:NG6 Cetop3 03:NG10 Cetop5	A:A port B:B port W:A&B port	D12:DC12 D24:DC24 A115:AC115 A230:AC230	NO:Normal open NC:Normal closed	20

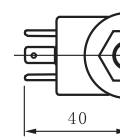
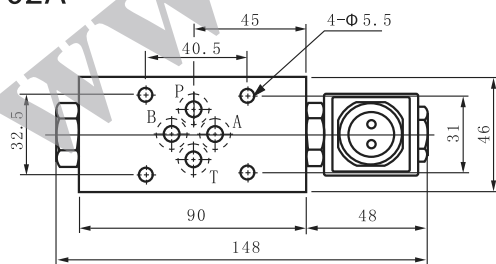
**Dimensions**

Unit: mm

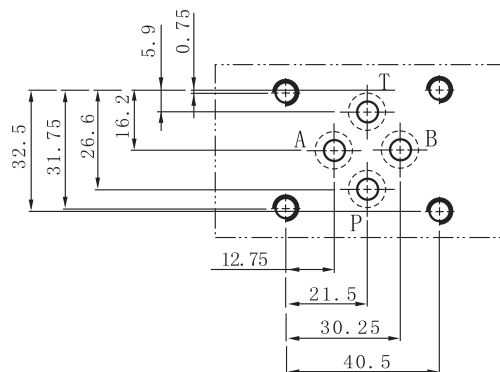
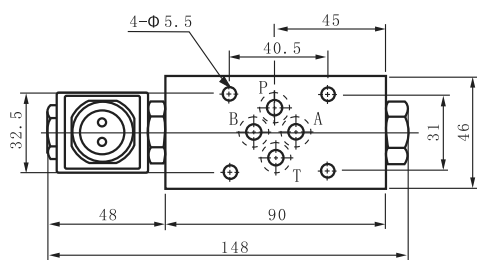
**MSC-02W**



**MSC-02A**



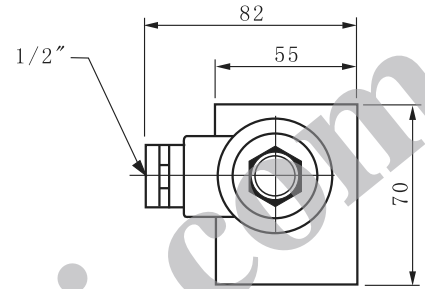
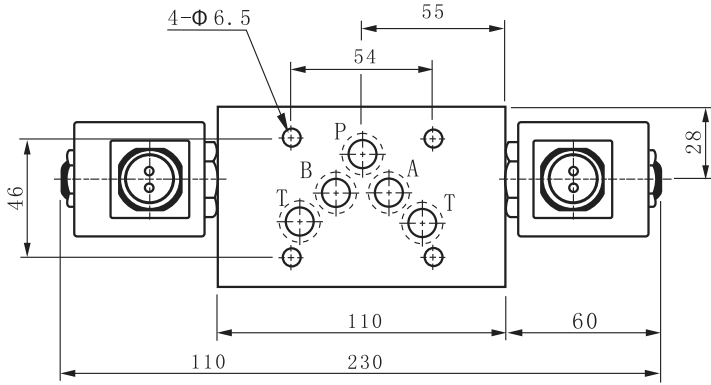
**MSC-02B**



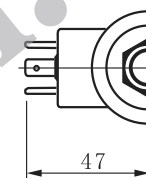
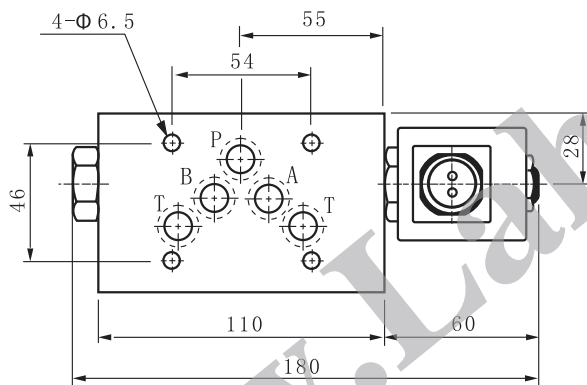
Dimensions

Unit: mm

MSC-03W



MSC-03A



MSC-03B

