

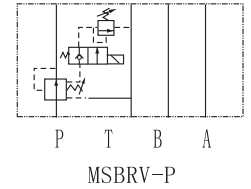
MBSRV series modular solenoid operated reducing valves are used to reduce the pressure in a certain circuit lower than of the main circuit, using solenoid valves can control pressure reducing range in two state.



**Technical specification**

| Model                  | MSBRV-02 | MSBRV-03 |
|------------------------|----------|----------|
| Max. flow rate (l/min) | 35       | 70       |
| Working pressure (MPa) | 25       |          |
| Weight(kgs)            | 4.8      | 8.2      |

**Symbol list**



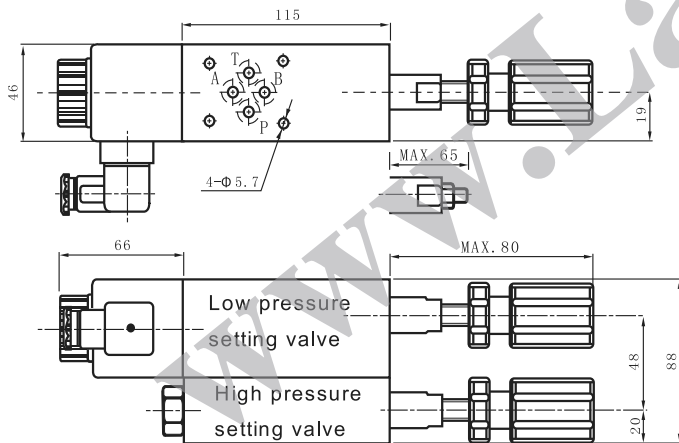
**Ordering details**

| MSBRV                                    | 02                              | P              | 1  | K   | 1  | A230   | 20          |
|--|---------------------------------|----------------|--|---|--|--|-------------|
| Sort                                     | Nominal size                    | Pilot oil port | High pressure adjustment range                         | Adjustment type                               | Low pressure adjustment range                          | Input voltage                                    | Design code |
| Modular solenoid operated reducing valve | 02:NG6 Cetop3<br>03:NG10 Cetop5 | P:P port       | 0:1.5~35bar<br>1:8~70bar<br>2:35~140bar<br>3:70~250bar | No code: Without knob<br>K: With plastic knob | 0:1.5~35bar<br>1:8~70bar<br>2:35~140bar<br>3:70~250bar | D12:DC12<br>D24:DC24<br>A115:AC115<br>A230:AC230 | 20          |

**Dimensions**

Unit: mm

**MSBRV-02P**



**MSBRV-03P**

