

H(C)G series sequence counter balance unloading valves can be used as sequence valve, counter balance valve or unloading valve by different assembly. C type is with a check valve.



Technical specification

Model	HG-03	HCG-03	HG-06	HCG-06
Max.flow rate (l/min)	50		125	
Working pressure (MPa)	25			
Weight(kgs)	4	4.8	6.1	7.4

Ordering details

H	C	G	03	B	4
Sort	With check valve	Mounting type	Nominal size	Pressure adjustment range	Oil control
Sequence counter balance unloading valves	No code: Without check valve C: With check valve	Subplate mounting	03:NG10 06:NG20	A:1.8~3.5MPa B:3.5~7MPa C:7~14MPa H:7~21MPa	1:Internal control internal drain 2:Internal control external drain 3:External control external drain 4:External control internal drain

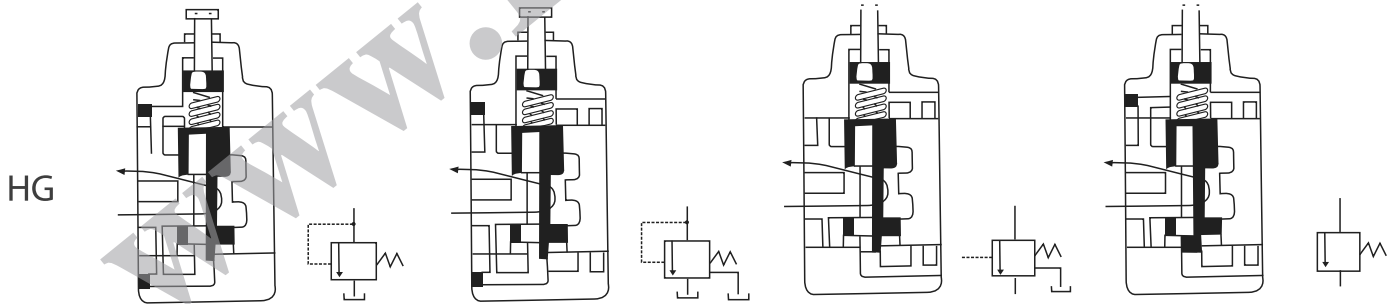
Symbol list

1:Internal control internal drain

2:Internal control external drain

3:External control external drain

4:External control internal drain

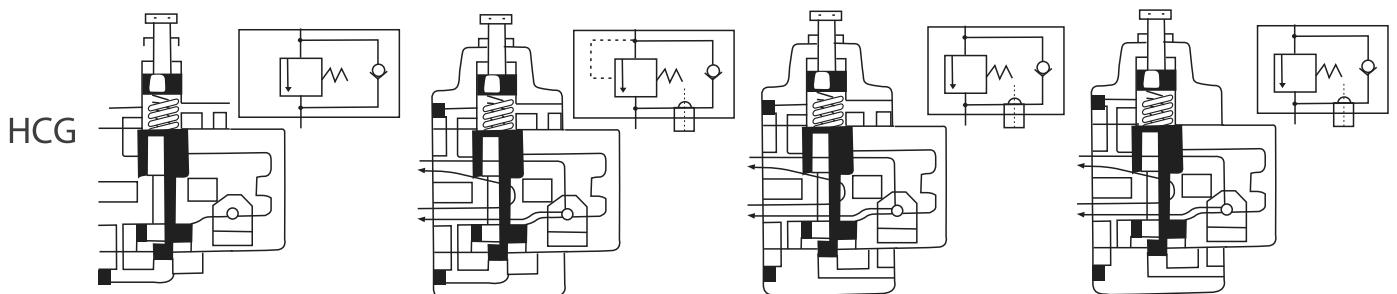


1:Internal control internal drain

2:Internal control external drain

3:External control external drain

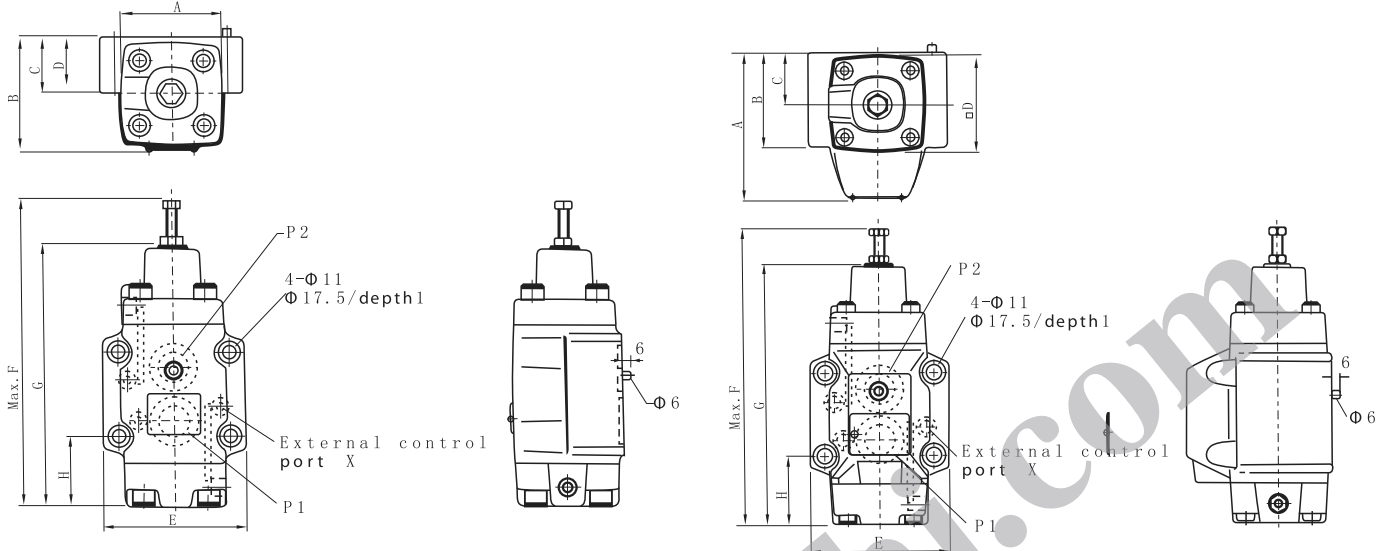
4:External control internal drain



Dimensions

Unit: mm

H(C)G-03/06



Model	A	B	C	D	E	F	G	H
HG-03	60	67	35	39	89	191	163	49.6
HG-06	73	79	40	39	102	221	188	51
HCG-03	90	59	35	60	89	191	163	49.6
HCG-06	108	69	40	73	102	221	188	51

Mounting size

Unit: mm

