

EDG series proportional directly operated relief valves can be used to control pressure in hydraulic systems with rapid response and high accuracy.

Ordering details



ED	G	01	2	10
Sort	Mounting type	Nominal size	Pressure adjustment range	Design code
Proportional directly operated relief valve	G:Subplate mounting	01	2:2~160bar 3:3~250bar	10:With safety valve 11:Without safety valve

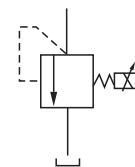
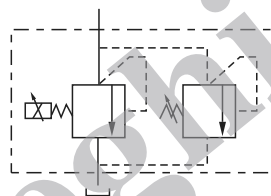
Technical specification

Model	EDG-01	
Max. working pressure (MPa)	25	
Max. flow rate (l/min)	2	
Min. flow rate (l/min)	0.3	
Pressure adjustment range (bar)	2~160	3~250
Rated current (mA)	900	950
Coil resistance (Ω)	10	
Hysteresis	<3%	
Repeatability	1%	
Weight(kgs)	2	

Symbol

With safety valve

Without safety valve



Dimensions

Unit: mm

EDG-01- \*-11

EDG-01- \*-10

