



DRE series proportional pilot operated pressure reducing valves can change system pressure continuously by electrical input signal.

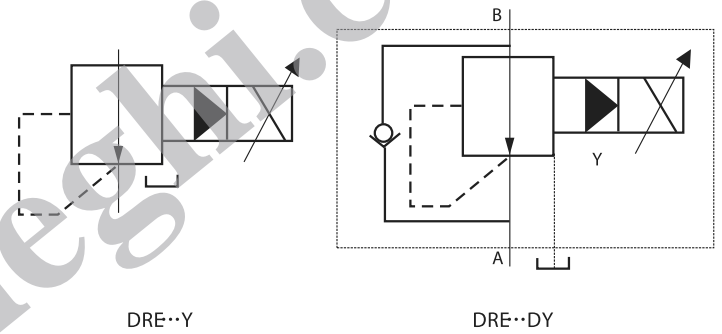
**Ordering details**

DRE	03	8	D	Y	50
Sort	Nominal size	Second pressure adjustment range	With check valve	Oil control	Design code
Proportional pilot operated pressure reducing valve	03:NG10 06:NG20 10:NG30	8:80bar 16:160bar 25:250bar 31.5:315bar	No code:without check valve D:with check valve	Y:internal control external drain	50

**Technical specification**

Model	DRE-03	DRE-06	DRE-10
Max. working pressure (MPa)	31.5		
Max. flow rate (l/min)	80	200	300
Rated current (mA)	800		
Coil resistance (Ω)	19.5		
Hysteresis	<2.5%		
Repeatability	2%		
Weight(kgs)	4.8	6.3	8.6

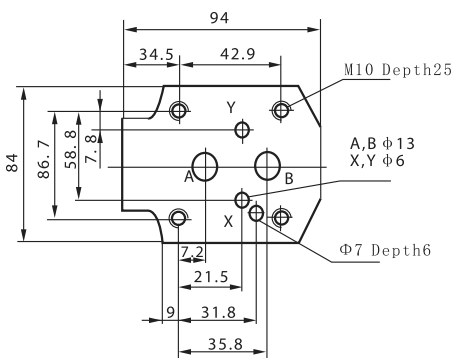
**Symbol**



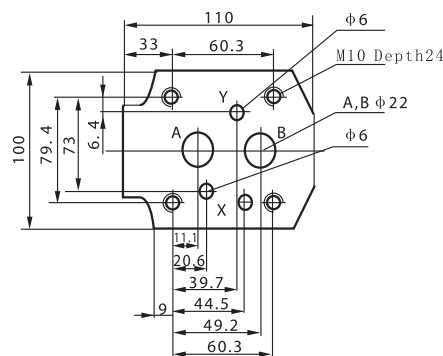
**Mounting size**

Unit: mm

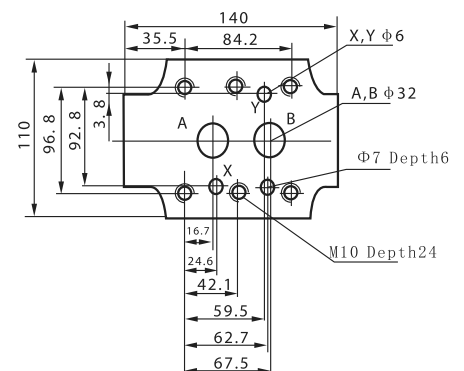
DRE-03



DRE-06

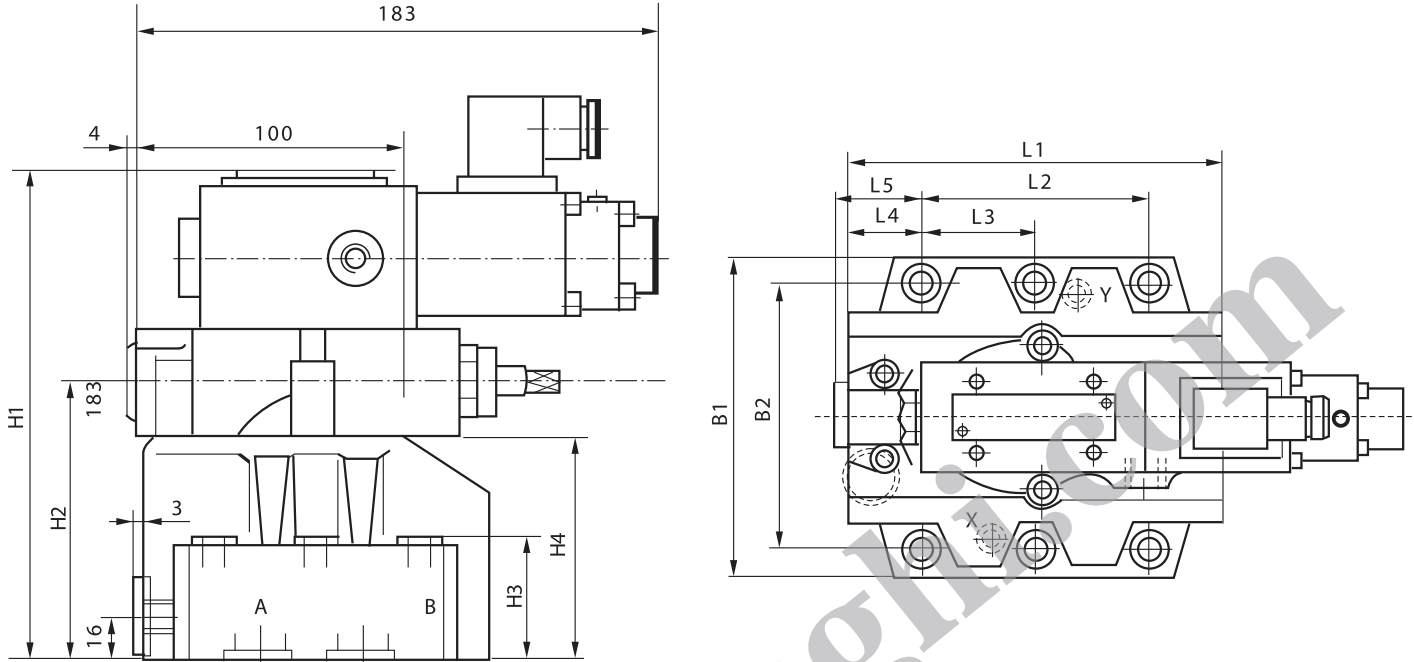


DRE-10



Dimensions

Unit: mm



Model	B1	B2	H1	H2	H3	H4	L1	L2	L3	L4	L5
DRE-03	85	66.7	190	92	28	72	90	42.9	-	35.5	34.5
DRE-06	102	79.4	200	102	38	82	112	60.3	-	33.5	37
DRE-10	120	96.8	208	110	46	90	140	84.2	42.1	28	31.3