

4WRA series proportional directional control valves are controlled by the proportional electromagnet, It is used to control the liquidity's flow and direction.



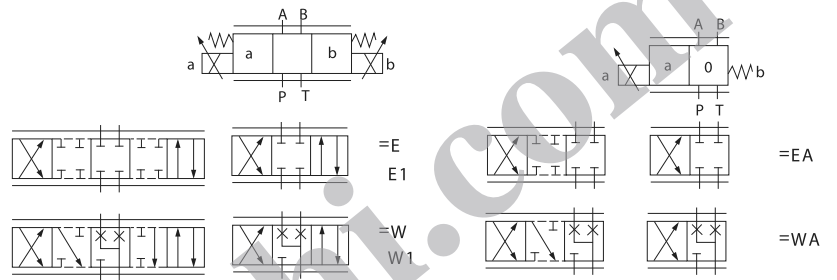
Ordering details

4WRA	6	E	2X	G24
Sort	Nominal size	symbols	Series number	Input voltage
Proportional directional control valve	6:NG6 10:NG10	See symbols list		G24:DC24

Technical specification

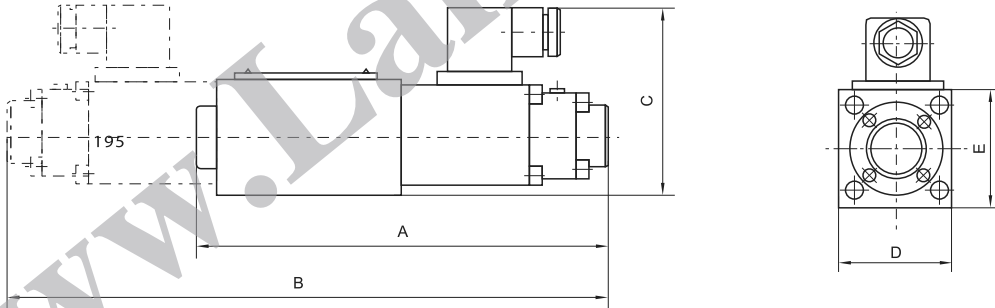
Model		4WRA6	4WRA10
Max.flow rate (l/min)		26	60
Working pressure (MPa)		A,B,P port 25	A,B,P port 25
		T port 16	T port 16
Weight (kgs)	Single solenoid	1.9	2.6
	double solenoids	3.8	4.5

Symbol list



Dimensions

Unit: mm



Model	A	B	C	D	E
4WRA6	171	250	78	47	47
4WRA10	205	285	100	70	68

