

3000 SERIES ROTARY JOINT



General Purpose
Water, Hot Water
 1/4" (DN08) - 2" (DN50)

- Single and duoflow design
- Balanced mechanical seal
- Easy replacement of sealing parts
- For poor water quality
- Threaded, flanged shafts
- Forged brass housing (MS58)
- Stainless steel shaft (AISI304)
- Silicon carbide sealing components

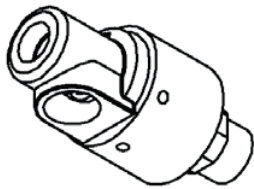
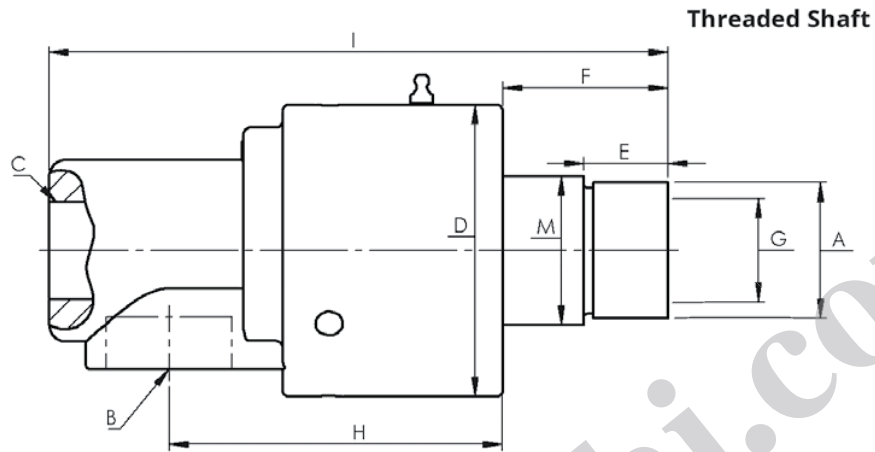
*** For further information please contact
 Rototech or local representative.

Working Conditions

Max. Water Pressure & Temperature	:	50 bar - 60°C
Max. Hot Water Pressure & Temperature	:	5 bar - 90°C
Max. Speed / RPM	:	1/4" - 1/2" 3.500 rpm/min
		3/4" - 1" 3.000 rpm/min
		1 1/4" - 1 1/2" 2.750 rpm/min
		2" 1.250 rpm/min



3000 Series 1/4" (DN08) - 2" (DN50) Single Flow Rotary Joints

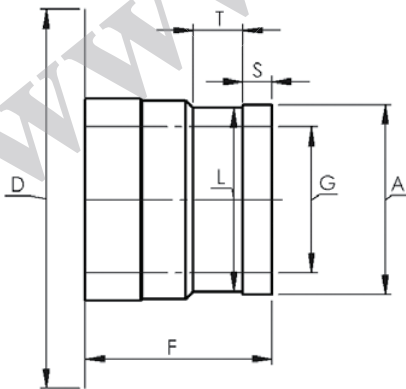


Single Flow Rotary Joint

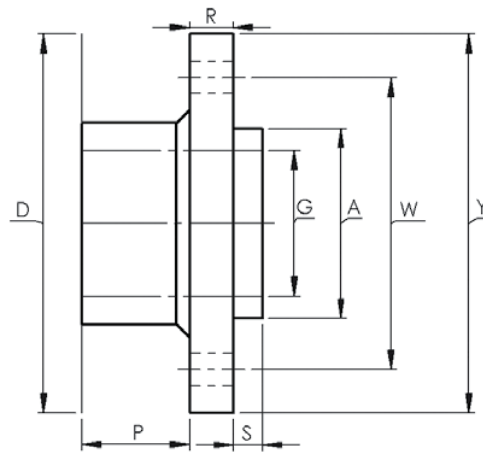
Single flow joints are used when supply and return lines are connected to opposite sides of the cylinder.

* Using see page 28

QR Shaft



Flanged Shaft

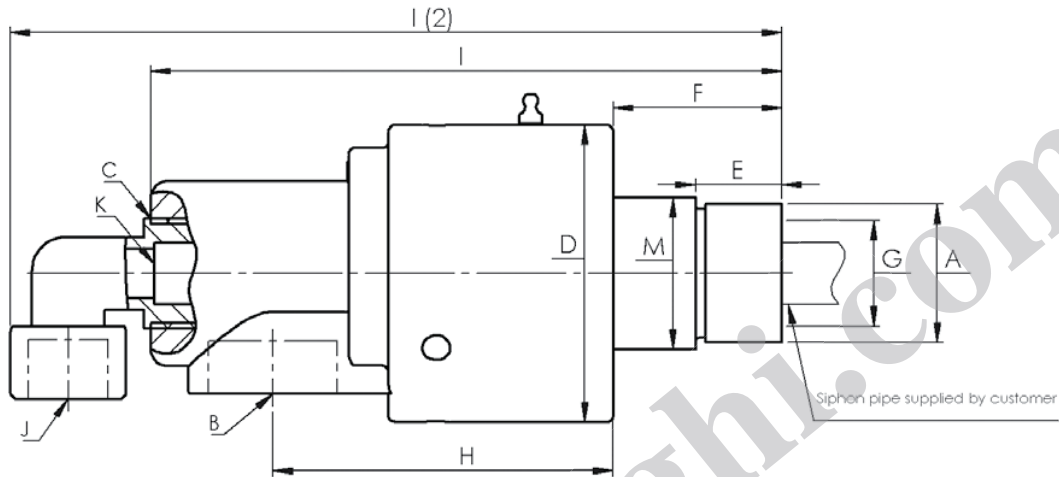


* Custom sized manufacturing are available

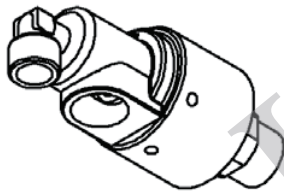
Size	B	Model No	A	D	F	E	G	H	C	I	M	L	P	R	S	T	W	Y	Kg			
DN08	1/4"	3025-036-102	NPT - RH	47	23,50	12	8	50	1/8"	92	20								0,58			
		3025-036-103	NPT - LH																			
		3025-336-203	BSP - RH																			
		3025-336-203	BSP - LH																			
DN10	3/8"	3037-036-104	NPT - RH	47	24	12	10	50	3/8"	92	22								0,58			
		3037-036-105	NPT - LH																			
		3037-336-204	BSP - RH																			
		3037-336-205	BSP - LH																			
DN15	1/2"	3050-036-106	NPT - RH	57	32	16	15	64,50	3/8"	119	29									0,90		
		3050-036-107	NPT - LH																			
		3050-036-100	QR	57	42		15	64,50	3/8"	129	29	22			6	11				0,90		
		3050-036-010	Flanged Shaft	57	36		15	64,50	3/8"	123	29			18	10			45	62	1,02		
		3050-336-206	BSP - RH	57	32	16	15	64,50	3/8"	119	29											0,90
		3050-336-207	BSP - LH																			
		3050-336-100	QR	57	42		15	64,50	3/8"	129	29	22			6	11				0,90		
		3050-336-010	Flanged Shaft	57	36		15	64,50	3/8"	123	29			18	10			45	62	1,02		
		3050-336-548	Metric 20x1,5 - RH	57	32	16	15	64,50	3/8"	119	29											0,90
3050-336-549	Metric 20x1,5 - LH																					
DN20	3/4"	3075-036-108	NPT - RH	67	35	18	20	74	1/2"	136	34									1,50		
		3075-036-109	NPT - LH																			
		3075-036-100	QR	67	47		20	74	1/2"	136	34	28			8	14				1,50		
		3075-036-010	Flanged Shaft	67	45		20	74	1/2"	136	34			25	12			55	75	1,60		
		3075-336-208	BSP - RH	67	35	18	20	74	1/2"	136	34											1,50
		3075-336-209	BSP - LH																			
		3075-336-100	QR	67	47		20	74	1/2"	136	34	28			8	14				1,50		
		3075-336-010	Flanged Shaft	67	45		20	74	1/2"	136	34			25	12			55	75	1,60		
		3075-336-568	Metric 27x1,5 - RH	67	35	18	20	74	1/2"	136	34											1,50
3075-336-569	Metric 27x1,5 - LH																					
DN25	1"	3100-036-110	NPT - RH	80	42,50	20	25	84	3/4"	156,50	39,50									1,80		
		3100-036-111	NPT - LH																			
		3100-036-100	QR	80	47		25	84	3/4"	161	39,50	33			8	14				1,80		
		3100-036-010	Flanged Shaft	80	45		25	84	3/4"	159	39,50			25	12			60	80	1,90		
		3100-336-210	BSP - RH	80	42,50	20	25	84	3/4"	156,50	39,50											1,80
		3100-336-211	BSP - LH																			
		3100-336-100	QR	80	47		25	84	3/4"	161	39,50	33			8	14				1,80		
		3100-336-010	Flanged Shaft	80	45		25	84	3/4"	159	39,50			25	12			60	80	1,90		
		3100-336-568	Metric 35x1,5 - RH	80	42,50	20	25	84	3/4"	156,50	39,50											1,80
3100-336-569	Metric 35x1,5 - LH																					
DN32	1 1/4"	3125-036-112	NPT - RH	90	51	26	32	103	1"	191	46									3,15		
		3125-036-113	NPT - LH																			
		3125-036-100	QR	90	52		32	103	1"	192	49,50	43			8	14				3,15		
		3125-036-010	Flanged Shaft	90	50		32	103	1"	190	49,50			30	12			75	100	3,30		
		3125-336-212	BSP - RH	90	51	26	32	103	1"	191	46											3,15
		3125-336-213	BSP - LH																			
		3125-336-020	QR	90	52		32	103	1"	192	49,50	43			8	14				3,15		
3125-336-010	Flanged Shaft	90	50		32	103	1"	190	49,50			30	12			75	100	3,30				
DN40	1 1/2"	3150-036-114	NPT - RH	106	58	30	40	112	1 1/4"	213	59									4,54		
		3150-036-115	NPT - LH																			
		3150-036-100	QR	106	57		40	112	1 1/4"	212	59	48			10	17				4,54		
		3150-036-010	Flanged Shaft	106	55		40	112	1 1/4"	210	59			30	15			80	105	4,90		
		3150-336-214	BSP - RH	106	58	30	40	112	1 1/4"	213	59											4,54
		3150-336-215	BSP - LH																			
		3150-336-020	QR	106	57		40	112	1 1/4"	212	59	48			10	17				4,54		
		3150-336-010	Flanged Shaft	106	55		40	112	1 1/4"	210	59			30	15			80	105	4,90		
		3150-336-598	Metric 50x1,5 - RH	106	58	30	40	112	1 1/4"	213	59											4,54
3150-336-599	Metric 50x1,5 - LH																					
DN50	2"	3200-036-116	NPT - RH	120	60	30	50	133,50	1 1/2"	245	69									7,00		
		3200-036-117	NPT - LH																			
		3200-036-100	QR	120	57		50	133,50	1 1/2"	242	69	63			10	17				7,00		
		3200-036-010	Flanged Shaft	120	55		50	133,50	1 1/2"	240	69			30	15			100	130	7,20		
		3200-336-216	BSP - RH	120	60	30	50	133,50	1 1/2"	245	69											7,00
		3200-336-217	BSP - LH																			
		3200-336-020	QR	120	57		50	133,50	1 1/2"	242	69	63			10	17				7,00		
		3200-336-010	Flanged Shaft	120	55		50	133,50	1 1/2"	240	69			30	15			100	130	7,20		

3000 Series 1/2" (DN15) - 2" (DN50) Duo Flow Rotary Joints

Threaded Shaft



Siphon Systems (K)
Stationary and rotating siphon systems are available.

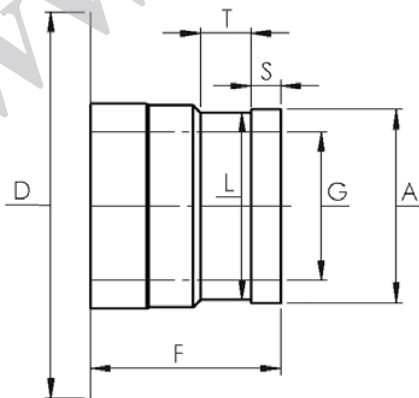


Duo Flow Rotary Joint

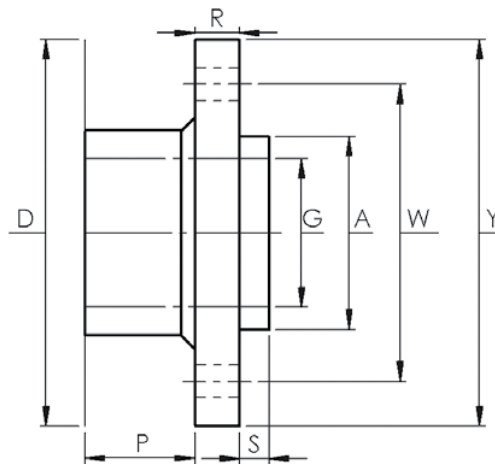
Dual flow joints are used when supply and return lines are connected to same side of the cylinder.

* Using see page 28

QR Shaft

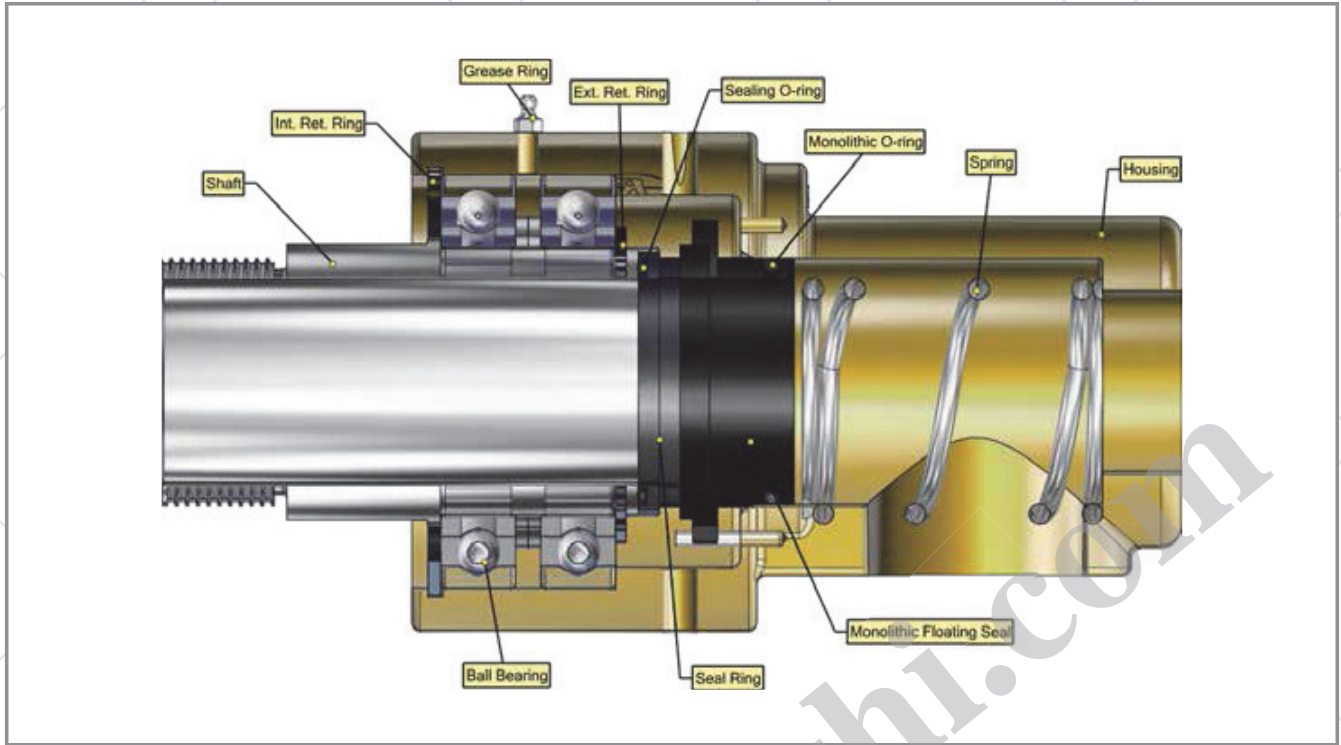


Flanged Shaft



* Custom sized manufacturing are available

Size DN	B	J	Model No	A ShaftType	D	1(2)	I	F	E	G	H	C	K	M	L	P	R	S	T	W	Y	Kg				
15	1/2"	3/8"	3050-036-106D	NPT - RH	57	150	119	32	16	15	64,50	3/8"	1/4"	29									1,02			
			3050-036-107D	NPT - LH																						
			3050-036-100D	QR	57	159	129	42		15	64,50	3/8"	1/4"	29	22			6	11						1,02	
			3050-036-010D	Flanged Shaft	57	153	123	36		15	64,50	3/8"	1/4"	29		18	10				45	62			1,25	
			3050-336-206D	BSP - RH	57	150	119	32	16	15	64,50	3/8"	1/4"	29												1,02
			3050-336-207D	BSP - LH																						
			3050-336-100D	QR	57	159	129	42		15	64,50	3/8"	1/4"	29	22			6	11							1,02
			3050-336-010D	Flanged Shaft	57	153	123	36		15	64,50	3/8"	1/4"	29		18	10				45	62			1,25	
			3050-336-548D	Metric 20x1,5 - RH	57	150	119	32	16	15	64,50	3/8"	1/4"	29												1,02
3050-336-549D	Metric 20x1,5 - LH																									
20	3/4"	1/2"	3075-036-108D	NPT - RH	67	171	136	35	18	20	74	1/2"	1/4"	34										1,60		
			3075-036-109D	NPT - LH																						
			3075-036-100D	QR	67	183	136	47		20	74	1/2"	1/4"	34	28			8	14						1,60	
			3075-036-010D	Flanged Shaft	67	181	136	45		20	74	1/2"	1/4"	34		25	12				55	75			1,60	
			3075-336-208D	BSP - RH	67	171	136	35	18	20	74	1/2"	1/4"	34												1,60
			3075-336-209D	BSP - LH																						
			3075-336-100D	QR	67	183	136	47		20	74	1/2"	1/4"	34	28			8	14						1,60	
			3075-336-010D	Flanged Shaft	67	181	136	45		20	74	1/2"	1/4"	34		25	12				55	75			1,60	
			3075-336-568D	Metric 27x1,5 - RH	67	171	136	35	18	20	74	1/2"	1/4"	34												1,60
3075-336-569D	Metric 27x1,5 - LH																									
25	1"	1/2"	3100-036-110D	NPT - RH	80	197	156,50	42,50	20	25	84	3/4"	3/8"	39,50										1,96		
			3100-036-111D	NPT - LH																						
			3100-036-100D	QR	80	201,50	161	47		25	84	3/4"	3/8"	39,50	33			8	14					1,96		
			3100-036-010D	Flanged Shaft	80	199,50	159	45		25	84	3/4"	3/8"	39,50		25	12				60	80			2,06	
			3100-336-210D	BSP - RH	80	197	156,50	42,50	20	25	84	3/4"	3/8"	39,50												1,96
			3100-336-211D	BSP - LH																						
			3100-336-100D	QR	80	201,50	161	47		25	84	3/4"	3/8"	39,50	33			8	14					1,96		
			3100-336-010D	Flanged Shaft	80	199,50	159	45		25	84	3/4"	3/8"	39,50		25	12				60	80			2,06	
			3100-336-568D	Metric 35x1,5 - RH	80	197	156,50	42,50	20	25	84	3/4"	3/8"	39,50												1,96
3100-336-569D	Metric 35x1,5 - LH																									
32	1 1/4"	3/4"	3125-036-112D	NPT - RH	90	235	191	51	26	32	103	1"	1/2"	46										3,26		
			3125-036-113D	NPT - LH																						
			3125-036-100D	QR	90	236	192	52		32	103	1"	1/2"	49,50	43			8	14					3,26		
			3125-036-010D	Flanged Shaft	90	234	190	50		32	103	1"	1/2"	49,50		30	12				75	100			3,41	
			3125-336-212D	BSP - RH	90	235	191	51	26	32	103	1"	1/2"	46												3,26
			3125-336-213D	BSP - LH																						
			3125-336-020D	QR	90	236	192	52		32	103	1"	1/2"	49,50	43			8	14					3,26		
3125-336-010D	Flanged Shaft	90	234	190	50		32	103	1"	1/2"	49,50		30	12				75	100			3,41				
40	1 1/2"	3/4"	3150-036-114D	NPT - RH	106	256	213	58	30	40	112	1 1/4"	3/4"	59										7,74		
			3150-036-115D	NPT - LH																						
			3150-036-100D	QR	106	256	212	57		40	112	1 1/4"	3/4"	59	48			10	17					4,74		
			3150-036-010D	Flanged Shaft	106	256	210	55		40	112	1 1/4"	3/4"	59		30	15				80	105			5,10	
			3150-336-214D	BSP - RH	106	256	213	58	30	40	112	1 1/4"	3/4"	59												4,74
			3150-336-215D	BSP - LH																						
			3150-336-020D	QR	106	256	212	57		40	112	1 1/4"	3/4"	59	48			10	17					4,74		
			3150-336-010D	Flanged Shaft	106	256	210	55		40	112	1 1/4"	3/4"	59		30	15				80	105			5,10	
			3150-336-598D	Metric 50x1,5 - RH	106	256	213	58	30	40	112	1 1/4"	3/4"	59												4,74
3150-336-599D	Metric 50x1,5 - LH																									
50	2"	1 1/4"	3200-036-116D	NPT - RH	120	301	245	60	30	50	133,50	1 1/2"	1"	69										7,33		
			3200-036-117D	NPT - LH																						
			3200-036-100D	QR	120	298	242	57		50	133,50	1 1/2"	1"	69	63			10	17					7,33		
			3200-036-010D	Flanged Shaft	120	296	240	55		50	133,50	1 1/2"	1"	69		30	15				100	130			7,33	
			3200-336-216D	BSP - RH	120	301	245	60	30	50	133,50	1 1/2"	1"	69												7,33
			3200-336-217D	BSP - LH																						
			3200-336-020D	QR	120	298	242	57		50	133,50	1 1/2"	1"	69	63			10	17					7,33		
			3200-336-010D	Flanged Shaft	120	296	240	55		50	133,50	1 1/2"	1"	69		30	15				100	130			7,33	



Spare Part List

No	Product	3025	3037	3050	3075	3100	3125	3150	3200
1	Cartridge	3025-C BSP-RH	3037-C BSP-RH	3050-C BSP-RH	3075-C BSP-RH	3100-C BSP-RH	3125-C BSP-RH	3150-C BSP-RH	3200-C BSP-RH
		3025-C BSP-LH	3037-C BSP-LH	3050-C BSP-LH	3075-C BSP-LH	3100-C BSP-LH	3125-C BSP-LH	3150-C BSP-LH	3200-C BSP-LH
		3025-C NPT-RH	3037-C NPT-RH	3050-C NPT-RH	3075-C NPT-RH	3100-C NPT-RH	3125-C NPT-RH	3150-C NPT-RH	3200-C NPT-RH
		3025-C NPT-LH	3037-C NPT-LH	3050-C NPT-LH	3075-C NPT-LH	3100-C NPT-LH	3125-C NPT-LH	3150-C NPT-LH	3200-C NPT-LH
				3050-C QR	3075-C QR	3100-C QR	3125-C QR	3150-C QR	3200-C QR
2	T-1	3025-336-1	3037-336-1	3050-336-1	3075-336-1	3100-336-1	3125-336-1	3150-336-1	3200-336-1
3	T-2	3025-336-2	3037-336-2	3050-336-2	3075-336-2	3100-336-2	3125-336-2	3150-336-2	3200-336-2



Cartridge

- Shaft
- Ball bearing (2 pcs.)
- Seal ring
- Seal o-ring
- Monolithic Ring
- Monolithic o-ring
- Spacer
- Spring

T-1

- Seal Ring
- Seal O-ring
- Monolithic Ring
- Monolithic O-ring
- Washer

T-2

- Seal Ring
- Seal O-ring
- Monolithic Ring
- Monolithic O-ring