

## 6000 SERIES ROTARY JOINTS

Hydraulic Oil, Vacuum, Brake Fluid  
1/2" (DN15) - 1" (DN25)

- Dual flow
- Balanced sealing
- Self supported
- Chrome-plated shaft
- Bronze bearing
- Aluminium housing



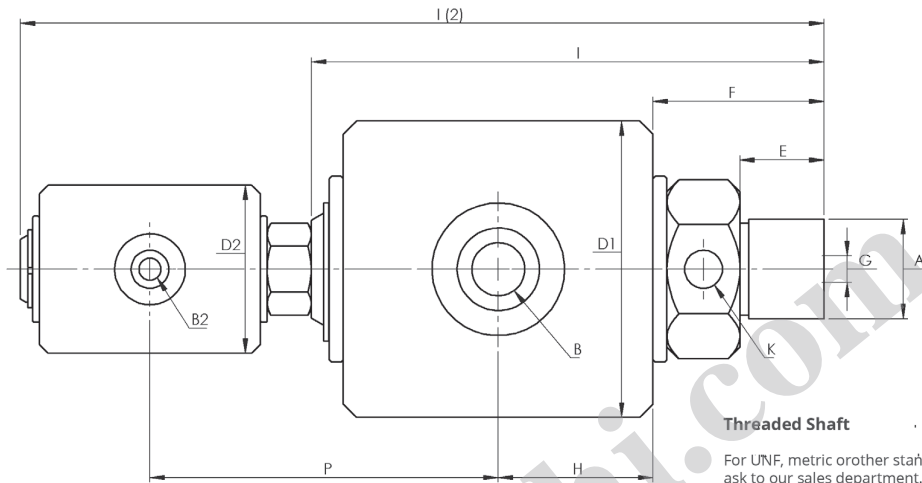
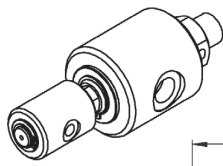
### Working Conditions

Max. Air Pressure	:	10 Bar
Max. Vacuum	:	6,7 kPoc
Max. Hydraulic Oil Pressure	:	200 Bar
Max. Speed	:	250 rpm/min
Max. Temperature	:	120 °C

\*\*Do not use max. Speed & pressure at the same time.



### 6000 Series 1/2" (DN15) - 1" (DN25) Duo Flow Rotary Joints



\* Custom sized manufacturing are available.

Size DN	B1	B2	Model No	A Shaft Gear Type	D1	D2	I(2)	I	E	F	G	H	I	K	Kg
15	1/2" (NPT)	1/8" (NPT)	6050-1010-106	1/2" NPT - Right	67	38	182	116	19	39	6,00	35	79	1/8" (NPT)	1,54
			6050-1010-206	1/2" BSP - Right										1/8" (BSP)	
	1/2" (BSP)	1/8" (BSP)	6051-1100-106	1/2" NPT - Right											
			6051-1101-206	1/2" BSP - Right											
20	3/4" (NPT)	1/4" (NPT)	6070-2010-108	3/4" NPT - Right	67	38	187	120	19	42	6,40	35	80	1/4" (NPT)	1,75
			6070-2010-208	3/4" BSP - Right										1/4" (BSP)	
	3/4" (BSP)	1/4" (BSP)	6071-2111-108	3/4" NPT - Right											
			6071-2111-208	3/4" BSP - Right											
25	1" (NPT)	3/8" (NPT)	6100-3020-110	1" NPT - Right	88	38	210	143	22	50	10,00	35	88	3/8" (NPT)	2,50
			6100-3021-210	1" BSP - Right										3/8" (BSP)	
	1" (BSP)	3/8" (BSP)	6101-3120-110	1" NPT - Right											
			6101-3121-210	1" BSP - Right											

