

## 100 - 105 SERIES ROTARY JOINTS



**COOLANT**  
 (FOR CNC MILLING & TURNING MACHINES)  
 1/4" (DN08) - 3/8" (DN10)

- Monoflow using
- Self supported system
- Threaded and special connections
- Anti vibration working
- Silicon carbide sealing
- Aluminium housing
- Stainless steel shaft
- Anti corrosion components
- Axial (180°) & radial (90°) inlets

\*\*\* No Dry Run!

### Working Conditions

Max. Pressure	:	40 Bar
Max. Speed	:	6000 rpm/min
Max. Flow Rate	:	80 lt/min
Max. Temperature	:	70 °C

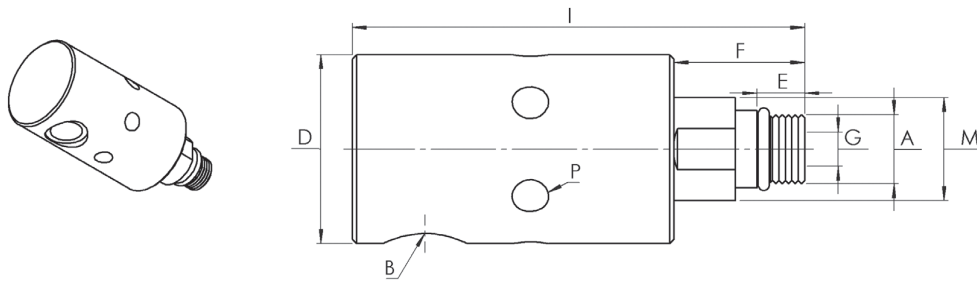


**100 Series**  
 Axial Connection

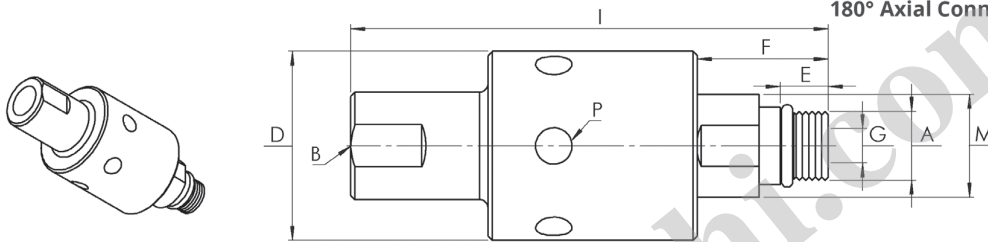
**105 Series**  
 Radial Connection

### 100-105 Series 1/4" (DN08) - 3/8" (DN10) Single Flow Rotary Joints

90° Radial Connection



180° Axial Connection



\* Custom sized manufacturing are available.

	Model No	B	D	I	P Drange	A Shaft	E	F	G	M	Kg
RADIAL (90°)	100-344-403	1/4" NPT	44	111	8,50	5/8" - 18 UNF / LH	11	31	8	22	0,30
	100-444-531	1/4" BSP	44	111	8,50	M16 X 1,5 / LH	11	31	8	22	0,30
	100-544-403	3/8" NPT	44	111	8,50	5/8" - 18 UNF / LH	11	31	8	22	0,33
	100-644-531	3/8" BSP	44	111	8,50	M16 X 1,5 / LH	11	31	8	22	0,33
AXIAL (180°)	105-344-403	1/4" NPT	44	111	8,50	5/8" - 18 UNF / LH	11	31	8	22	0,30
	105-444-531	1/4" BSP	44	111	8,50	M16 X 1,5 / LH	11	31	8	22	0,30
	105-544-403	3/8" NPT	44	111	8,50	5/8" - 18 UNF / LH	11	31	8	22	0,33
	105-644-531	3/8" BSP	44	111	8,50	M16 X 1,5 / LH	11	31	8	22	0,33

