

GT Series Turbine Vibrators

Need Quiet AND Low Maintenance?



The GT Series fits the bill

GT Series Pneumatic Turbine Vibrators

GT Series Pneumatic Turbine Vibrators are ideal for applications in the food and pharmaceutical industries, and others involving fine, dry powders that respond well to high frequency vibration. They require no lubrication, and produce less noise than other types of rotary pneumatic vibrators.

There are 12 models available, with forces to over 2300 pounds. Some sizes are also available in stainless steel housings.

Standard features & benefits

- Lightweight Alloy Body, powder coated to resist corrosion
- Matched & shielded ball bearings pre-lubricated with long life grease
- Low noise output
- Low air consumption*
- Adjustable force and frequency
- Exhaust muffler included

Available Options & Accessories

- Bin/Hopper/Chute Mounting Kits
- Pipe Mounting Kits
- Air Prep Components
- Air Hoses
- Pneumatic and Electronic Timers
- Stainless Housings (available for some sizes)

*as compared to other types of rotary vibrators with similar force output

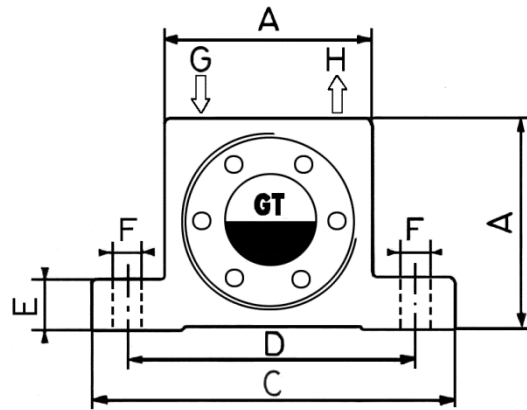
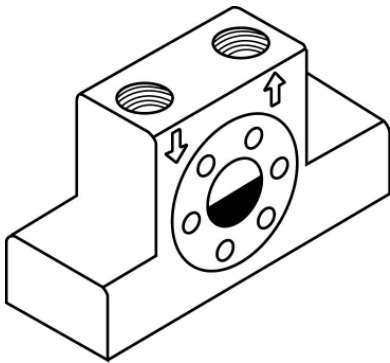
A few common applications Include:

- Food Ingredient bins
- Pharmaceutical Ingredient bins
- Weigh hoppers
- Light duty vibrating tables & platforms
- Small feeders
- Transfer pipes
- Chutes

Stainless Steel models are available in some sizes. See the GTSS Series on our website.

Contact the Houston Vibrator sales team for assistance in choosing the right vibrator for your application requirements.

GT Series Technical Data



Dimensional Data

Model	A		B		C		D		E		F		G/H BSP*	Weight	
	mm	in	mm	in	mm	in	mm	in	mm	in	mm	in		kg	lbs
GT-4	40	1.57	28	1.10	70	2.75	56	2.20	10	0.39	6	0.23	1/8"	.167	.37
GT-6	40	1.57	28	1.10	70	2.75	56	2.20	10	0.39	6	0.23	1/8"	.161	.35
GT-8	50	1.97	33	1.30	86	3.38	68	2.68	12	0.47	7	0.27	1/8"	.255	.56
GT-10	50	1.97	33	1.30	86	3.38	68	2.68	12	0.47	7	0.27	1/8"	.258	.57
GT-13	65	2.56	42	1.65	113	4.45	90	3.54	16	0.63	9	0.35	1/4"	.555	1.22
GT-16	65	2.56	42	1.65	113	4.45	90	3.54	16	0.63	9	0.35	1/4"	.566	1.25
GT-20	80	3.15	56	2.20	128	5.04	104	4.09	16	0.63	9	0.35	1/4"	1.076	2.37
GT-25	80	3.15	56	2.20	128	5.04	104	4.09	16	0.63	9	0.35	1/4"	1.112	2.45
GT-30	100	3.94	73	2.87	160	6.30	130	5.12	20	0.79	11	0.43	3/8"	2.201	4.84
GT-36	100	3.94	73	2.87	160	6.30	130	5.12	20	0.79	11	0.43	3/8"	2.301	5.06
GT-40	120	4.72	83	3.26	194	7.63	152	5.98	24	0.94	17	0.66	3/8"	3.696	8.13
GT-48	120	4.72	83	3.26	194	7.63	152	5.98	24	0.94	17	0.66	3/8"	3.858	8.49

*will accept NPT

Operational Data

Model	Frequency VPM			Centrifugal Force						Air Consumption/Minute					
	2 Bar		4 Bar	2 Bar		4 Bar		6 Bar		2 Bar		4 Bar		6 Bar	
	29 PSI	58 PSI	87 PSI	N	Lb	N	Lb	N	Lb	Litr	CF	Litr	CF	Litr	CF
GT-4	14000	14430	15000	135	30	180	40	200	44	33	1.1	58	2.0	83	2.9
GT-6	11500	12000	12500	130	29	175	39	210	47	33	1.1	58	2.0	83	2.9
GT-8	36000	42000	46000	990	222	2060	462	2910	652	46	1.6	80	2.8	112	3.9
GT-10	27500	35000	37500	840	188	1390	312	2400	538	46	1.6	80	2.8	112	3.9
GT-13	26000	30000	33000	1400	313	2440	574	3730	836	120	4.2	200	7.0	290	10.2
GT-16	17000	21500	24000	1220	274	2090	469	3160	708	120	4.2	200	7.0	290	10.2
GT-20	17000	20000	23000	2170	487	4040	906	5520	1238	185	6.6	325	11.4	455	15.9
GT-25	12000	15500	17000	2120	475	3510	787	5070	1137	185	6.6	325	11.4	455	15.9
GT-30	13000	14000	16000	3380	578	5430	1217	7540	1690	330	11.5	530	18.5	745	26.0
GT-36	8000	10000	13000	3290	738	5360	1202	7190	1612	330	11.5	530	18.5	745	26.0
GT-40	7700	8800	9500	4300	964	7300	1636	9800	2197	425	15	700	24.7	970	34.2
GT-48	6000	7500	9700	4900	1098	7700	1726	10500	2354	425	15	700	24.7	970	34.2